



Isolation thermique par l'extérieur

"Système enduit sur isolant sur façade existante"

Quelques bonnes pratiques
Avec la participation de



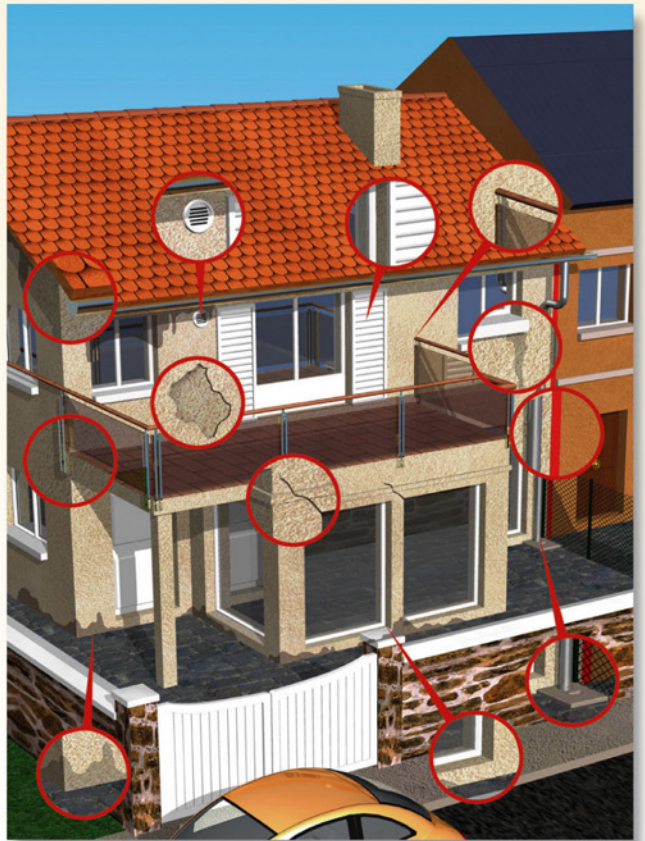
AIMCC, CAPEB UNA MC, CAPEB UNA PVR, CSTB, G2M, UMPI-FFB, UNEEF-FFB, UNTEC, SNMI, UPPF-FFB, www.qualiteconstruction.com



©AOC - Avril 2009 - ISBN 978-2-35443-040-5 - mémo chantier®

1

Diagnostic de l'existant*



*Selon Avis Technique (AT), Agrément Technique Européen (ATE) Certificat ACERMI pour la masse isolante

2

Analyse du support



3

Analyse de l'environnement

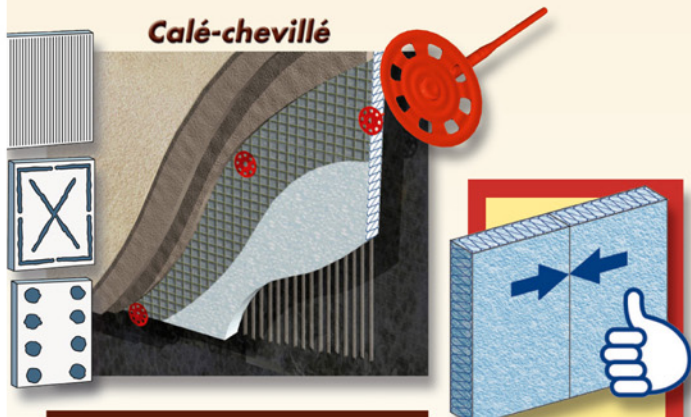


4

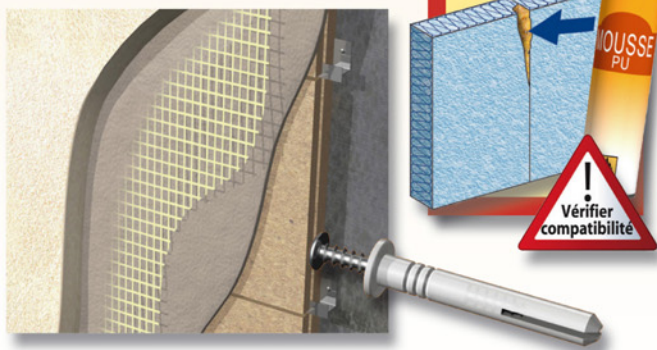
Mode de fixation de l'isolant

(polystyrène, laine de roche et autres...)

Calé-chevillé



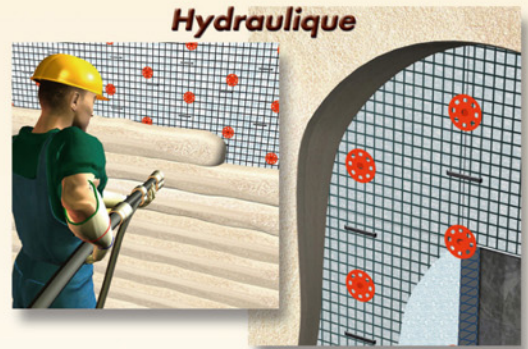
Mécanique sur rails



5

Enduits

Hydraulique



*Voir Avis Technique du système

Mince

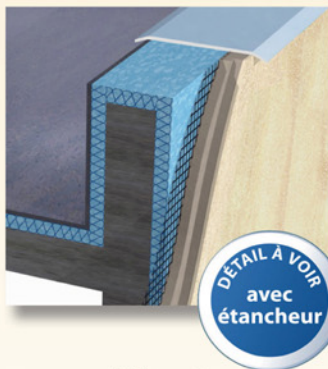


9 782354 430405

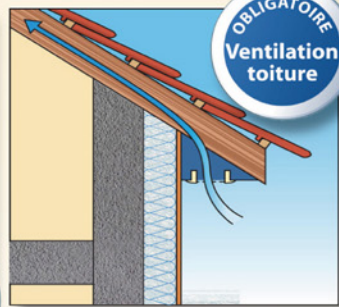
6

Points singuliers

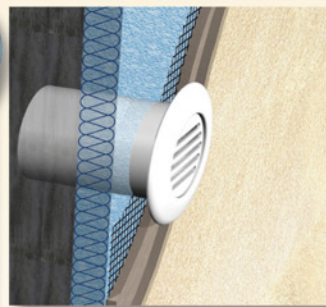
Toiture - terrasse



Toiture



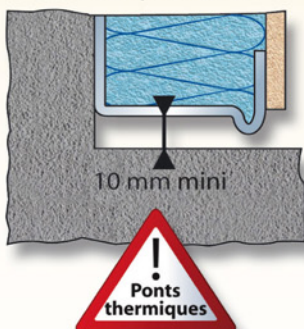
Ventilation



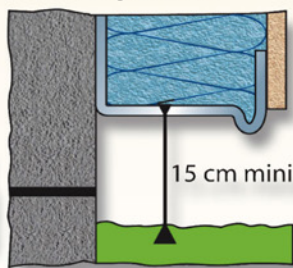
Scellement



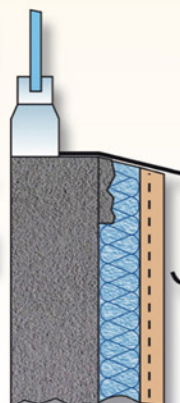
Départ balcon/terrace



Départ sol



Appuis de fenêtre



Mouchoirs



Retour tableau

